

XX = IDA-16, IDA-8, DAC-10/10H, DAC-9, or uDSD

To run the NuPrime XX on Mac – PCM:

1. Power on NuPrime XX, select USB input. The device will enumerate as a USB Audio device on your Mac.
2. In Audio Midi Setup, select the “NuPrime XX” device as your default Input and Output device.
3. The sample rate of the device can be selected using the drop down menu.
4. The audio is also output over SPDIF.

To run the NuPrime XX on Mac – DSD:

1. Install playback software on MAC.
Ex: Audirvana 15 days free http://audirvana.com/site/?page_id=112
2. In Preferences Setup, Audio System selects the “NuPrime XX” as your Default Device.
3. The Native DSD Capability select the “DSD Over PCM standard 1.0”
4. SPDIF output is not working on DSD playback.

To run the NuPrime XX on Windows – PCM:

1. Power on NuPrime XX, select USB input. The device will enumerate as a USB Audio device on your PC.
2. Install the NuPrime_DriverSetup_vxxx.
3. In Control Panel->Sound, select “NuPrime XX” as your Default Device.
4. The audio is also output over SPDIF.

To run the NuPrime XX on Windows – DSD

Install playback software on Windows

1. Install the Foobar media player
<http://www.foobar2000.org/getfile/079dd178a05e1c51445e77506daa5dd2/>
2. Download the ‘SACD’ plugin
<http://sourceforge.net/projects/sacddecoder/files/latest/download>
 - a. To install, in Foobar goto File->Preferences and select Components
 - b. Click the Install... button
 - c. Select the zip file
 - d. Click Apply (foobar will restart)

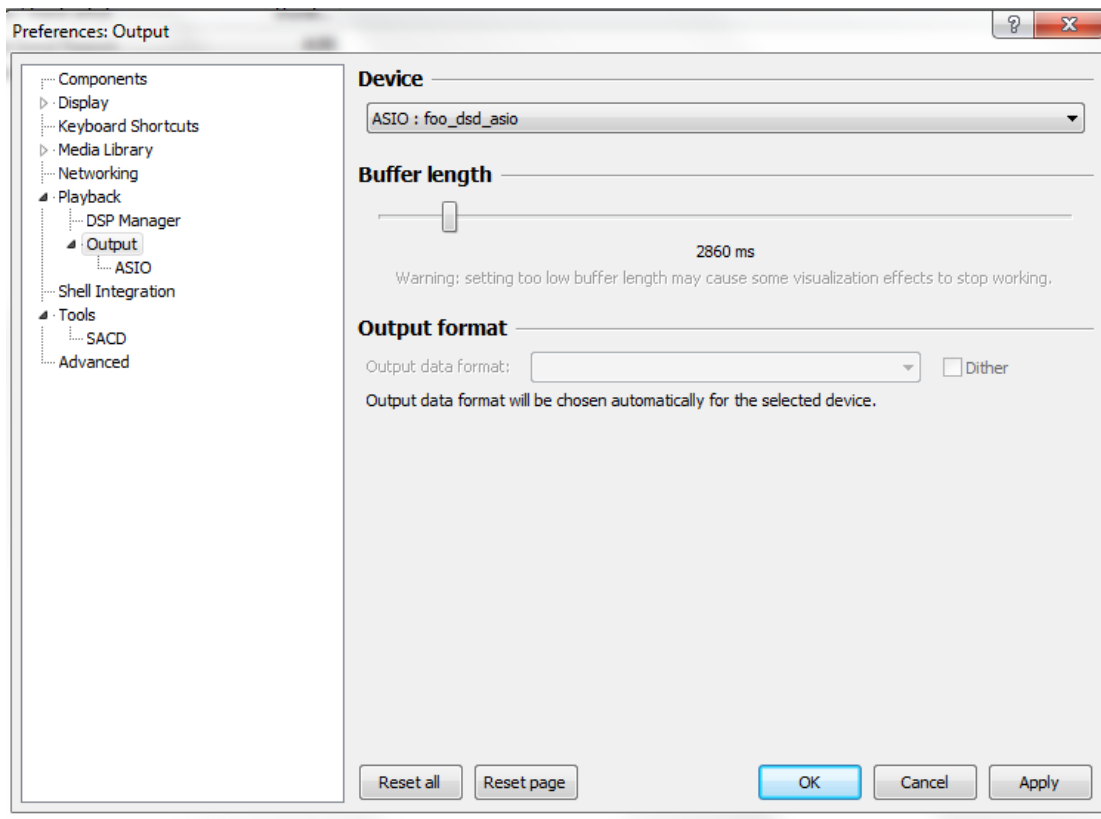
3. Download the ASIO plugin from

http://www.foobar2000.org/components/view/foo_out_asio

- a. Install the plugin
- b. Click Apply (foobar will restart)

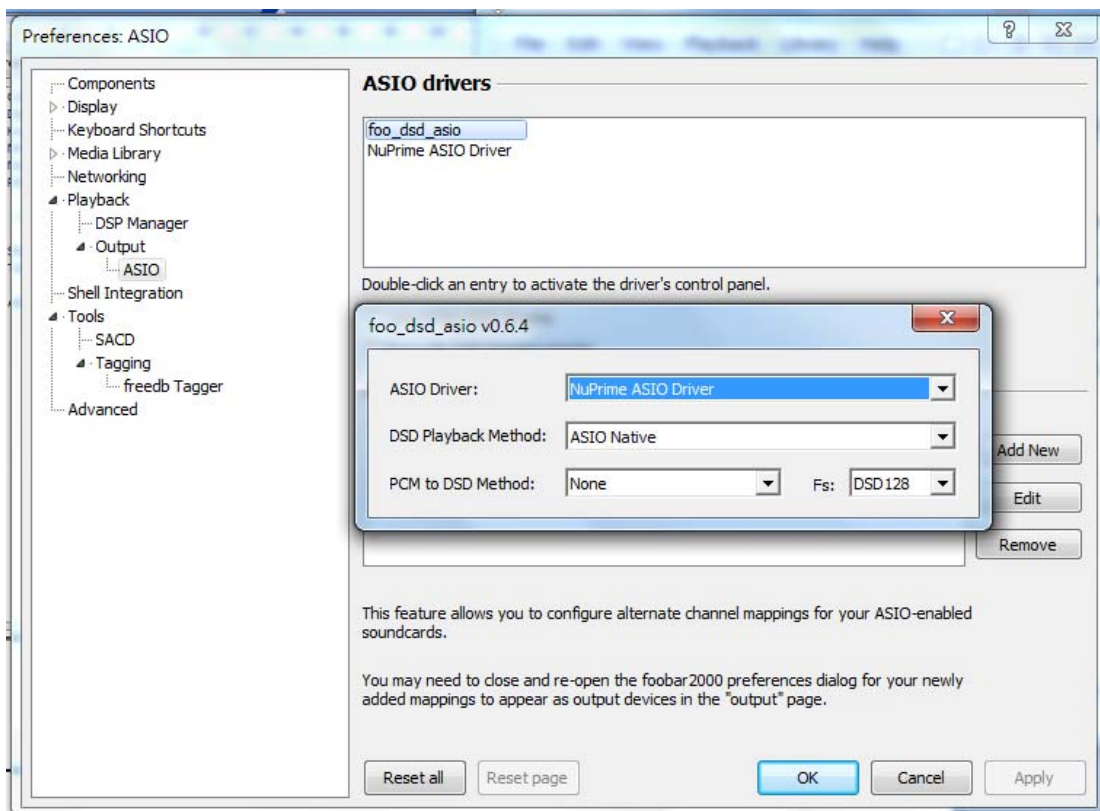
4. Configure the Output Device

- a. Goto Playback->Output
- b. Select the Device: ASIO foo_dsd_asio



5. Configure the ASIO output

- a. Goto Playback->Output->ASIO, double-click on foo_dsd_asio
- b. Select the NuPrime ASIO Driver
- c. Select ASIO Native
- d. Select PCM to DSD Method: None
- e. Select Fs: DSD128



6. Configure the SACD plugin to play DSD (and not convert from DSD to PCM)
 - a. Goto Tools->SACD
 - b. Set ASIO Driver Mode to DSD
 - c. Set PCM Sample Rate to 352800

